



THE RITZ-CARLTON  
YACHT COLLECTION

INTRODUCING

# THE RITZ-CARLTON YACHT COLLECTION

---

MAY 2019



# THANK YOU FOR JOINING US

---

Your contacts for Meetings, Incentives, Charters and Events



**Doug Prothero**

CEO

+1 305.458.2646

[douglas.prothero@ritz-carltonyachtcollection.com](mailto:douglas.prothero@ritz-carltonyachtcollection.com)



**Angela Composto**

SVP – Sales & Marketing

+1 954.850.5827

[angela.composto@ritz-carltonyachtcollection.com](mailto:angela.composto@ritz-carltonyachtcollection.com)

# YACHT SPECIFICATIONS



624

FEET

(190 METERS)

26,500

TONS

149

SUITES

298

GUESTS

246

CREW

1 to 1.21

RATIO

CREW:GUEST

# BRAND VALUE

AWARD-WINNING LUXURY  
HOTEL BRAND

STRONG BRAND  
RECOGNITION

HOSPITALITY AT A GOLD  
STANDARD

LEGENDARY LEVEL OF  
PERSONALIZED SERVICE



## THE RITZ-CARLTON

*"The Ritz-Carlton inspires life's most meaningful journeys."*

# THE EXPERIENCE

---

Designed to combine the lifestyle of the luxury resorts of The Ritz-Carlton and the casual freedom of a yachting vacation, The Ritz-Carlton Yacht Collection will offer itineraries at a relaxed pace and introduce guests to the local cultures of each destination through curated, immersive experiences ashore.

ALL-INCLUSIVE VALUE

PERSONALIZED SERVICE  
OF THE RITZ-CARLTON®

ALL-SUITE  
ACCOMMODATIONS, ALL  
WITH PRIVATE TERRACE

MULTIPLE DINING  
EXPERIENCES, 24HR IN-  
SUITE DINING, PLUS  
SPECIALTY DINING

UNIQUE MARINA-STYLE  
PLATFORM, DIRECT  
ACCESS TO WATER

VARIETY OF SOCIAL  
SPACES FOR  
RECEPTIONS &  
ENTERTAINMENT

RELAXED YACHTING  
PACE, OVERNIGHTS &  
DAYTIME PORTS OF  
CALL

CURATED, IMMERSIVE  
DESTINATION  
EXPERIENCES  
ASHORE

# ALL- INCLUSIVE VALUE

LUXURY ALL SUITE  
ACCOMMODATIONS

MULTIPLE DINING EXPERIENCES,  
24HR IN-SUITE DINING, PLUS  
SPECIALTY DINING\*

BEVERAGES IN-SUITE AND  
THROUGHOUT THE YACHT

ONBOARD ACTIVITIES &  
ENTERTAINMENT

ONBOARD GRATUITIES

WI-FI

*\*additional fee, reservations required*



# DINING

MISTRAL

TALAAAT NAM

THE POOL HOUSE

MAIN DINING EXPERIENCE

THE BAR

THE LIVING ROOM

THE MARINA TERRACE

S.E.A. – SPECIALTY  
RESTAURANT DESIGNED BY  
SVEN ELVERFELD\*

DINING PRIVÉE\*

PLUS ALFRESCO DINING  
OPTIONS AND 24HR IN-SUITE  
DINING

*\*additional fee, reservations required*

















# ALL SUITES

149 SUITES, ALL WITH PRIVATE  
TERRACE

HIGHEST PERCENTAGE OF  
LARGER SUITES IN LUXURY  
CRUISING

TWO OWNER'S SUITES WITH  
PRIVATE WHIRLPOOL

LOFTS AND COMBINABLE  
SUITES; FLEXIBLE  
CONFIGURATION

SUPERIOR GUEST AMENITIES



THE OWNER'S SUITE

# THE OWNER'S SUITE

1098 SQ FT/102 SQ M  
PLUS TERRACE 592 SQ FT/55 SQ M



# THE VIEW SUITE

571-624 SQ FT/53-58 SQ M  
PLUS TERRACE 86-97 SQ FT/8-9 SQ M





## THE LOFT SUITE

700 SQ FT/65 SQ M  
PLUS TERRACE 76 SQ FT/7 SQ M





# THE GRAND SUITE

635 SQ FT/59 SQ M  
PLUS TERRACE 108 SQ FT/10 SQ M



# THE SIGNATURE SUITE

474 SQ FT/44 SQ M  
PLUS TERRACE 101 SQ FT/9 SQ M





# THE TERRACE SUITE

312 SQ FT/29 SQ M  
PLUS TERRACE 67 SQ FT/6 SQ M



# SUITE AMENITIES AND FEATURES

---

Wake up every morning relaxed and carefree, from one of our 149 expertly appointed suites. Designed to combine the modern elegance of The Ritz-Carlton with the casual luxury of the world's most magnificent super yachts, our suites set a new standard for luxury travel.

---

SUITES FEATURE  
PRIVATE TERRACE  
OVERLOOKING THE  
OCEAN

DOUBLE VANITY  
BATHROOMS

ESPRESSO  
MACHINE WITH  
COMPLIMENTARY  
COFFEE AND TEAS

24-HOUR IN-SUITE  
DINING

COMPLIMENTARY  
WIFI

---

LUXURIOUS  
CUSTOM KING BED  
SYSTEM AND  
LINENS

REFRIGERATOR  
PROVISIONED TO  
YOUR  
PREFERENCES

COMPLIMENTARY  
BOTTLE OF  
CHAMPAGNE UPON  
ARRIVAL

INDIVIDUAL ROBE  
AND SLIPPERS

ACCESS TO A  
PERSONAL  
CONCIERGE FOR  
ALL SUITES

# MARINA

MULTI-FUNCTIONAL  
PLATFORM

OFFERS DIRECT ACCESS TO  
THE WATER

WATERSPORTS DURING  
PORT DAYS

IDEAL SPACE FOR OPEN-AIR  
SOCIAL GATHERINGS AND  
PRIVATE EVENTS



# PUBLIC SPACES

INTIMATE, RELAXED,  
CASUALLY ELEGANT  
ATMOSPHERE

INTUITIVE, RESIDENTIAL  
FEEL

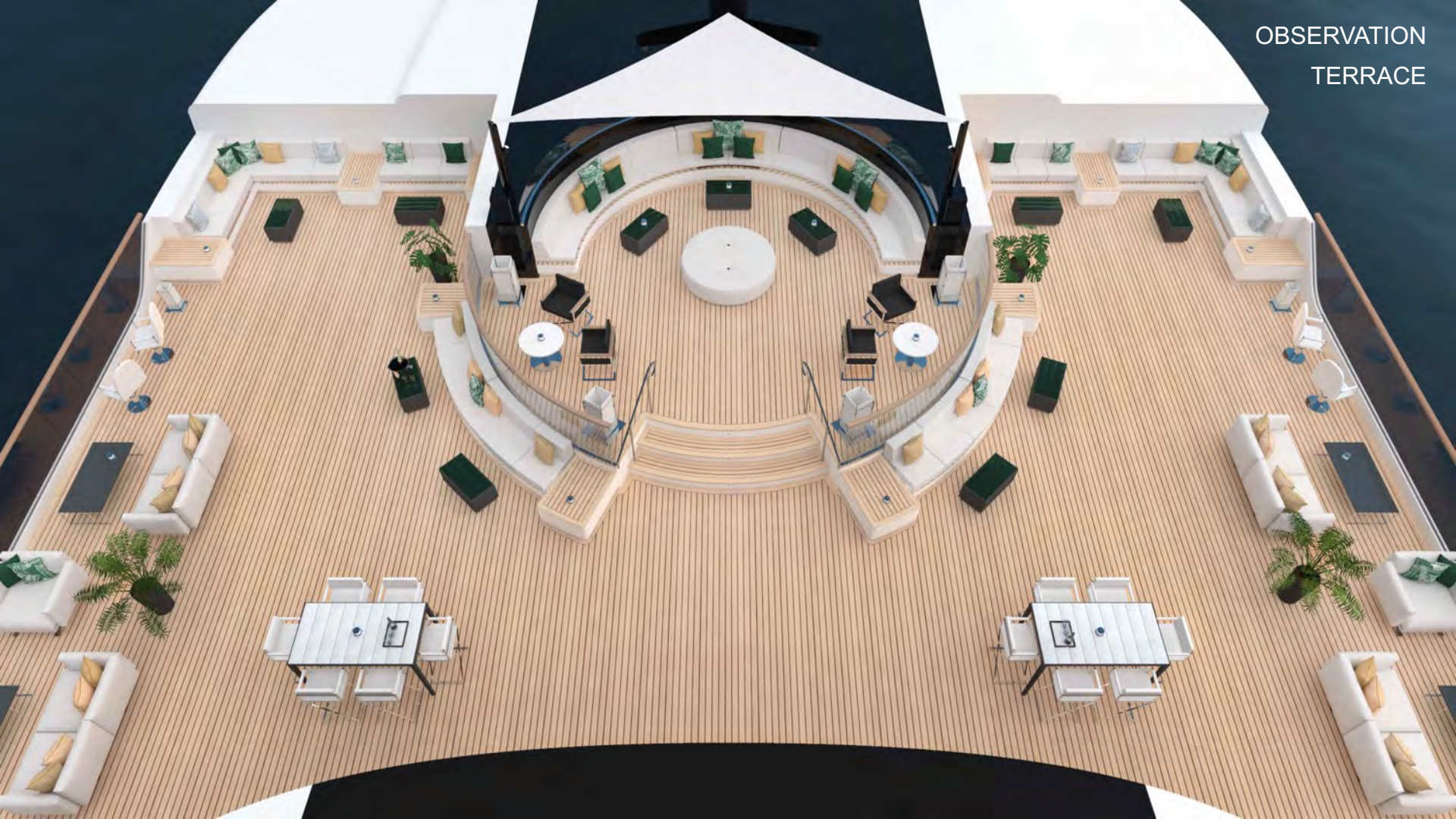
LOUNGE AND BAR OFFER A  
VARIETY OF  
ENTERTAINMENT  
EXPERIENCES

ACTIVELY SOCIALIZE OR  
ENJOY PRIVACY

PEACEFUL RETREAT BY  
DAY, SOCIAL SCENE BY  
NIGHT



OBSERVATION  
TERRACE













# SPA & WELLNESS

SPA DESIGNED AND  
OPERATED BY  
THE RITZ-CARLTON®

INDOOR/OUTDOOR  
TREATMENT ROOMS

RELAXATION AREAS

STATE-OF-THE-ART  
FITNESS EQUIPMENT











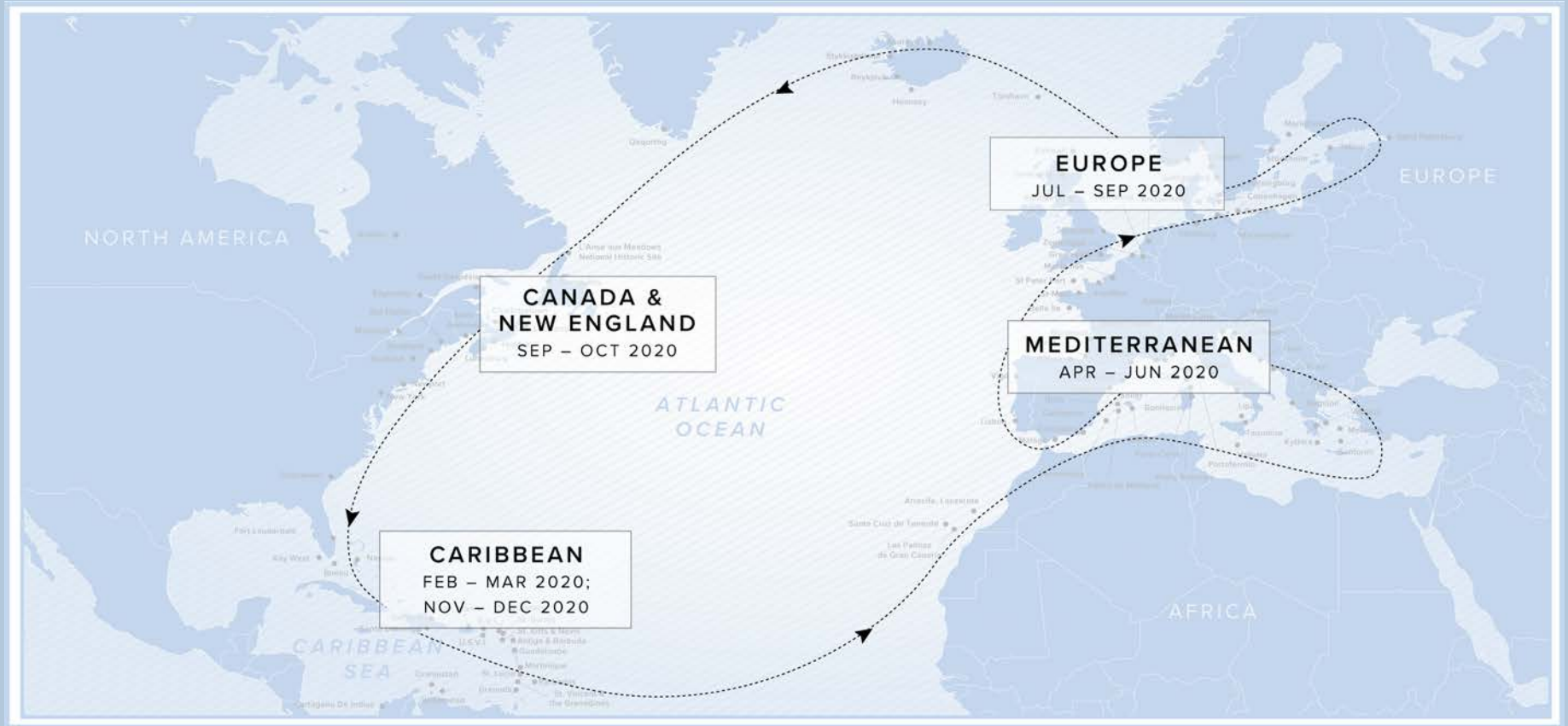




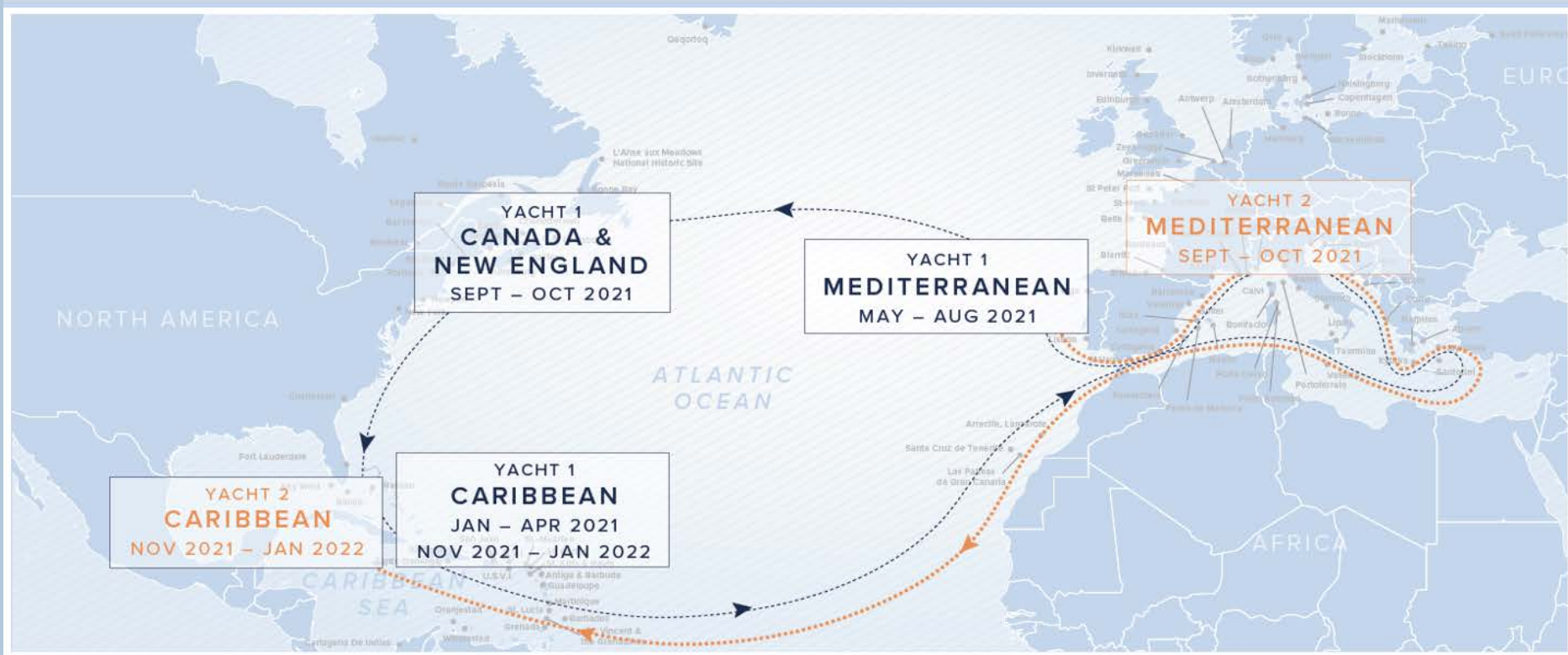


# ITINERARIES

# 2020 SEASON – YACHT 1



# 2021 SEASON – YACHT 1 & YACHT 2



# RELAXED PACE

MORE OVERNIGHTS IN  
PORTS OF CALL

MOST VOYAGES RANGE 4-  
10 NIGHTS

ABILITY TO COMBINE BACK-  
TO-BACK VOYAGES  
WITHOUT REPEATING  
PORTS

INTIMATE SIZE ALLOWS  
ACCESS TO COVETED  
YACHTING DESTINATIONS



# IMMERSIVE EXPERIENCES

THE SHORE COLLECTION –  
CRAFTED EXPERIENCES TO  
SUIT VARIOUS INTERESTS &  
ACTIVITY LEVELS

ICONIC SIGHTS

STIRRING THE SENSES

CULTURAL CONNECTIONS

ACTIVE EXPLORATIONS

EPICUREAN EXPERIENCES

CONCIERGE ASHORE FOR  
BESPOKE ARRANGEMENTS



BUY-OUTS,  
MEETINGS &  
INCENTIVE GROUPS

# FULL YACHT BUY OUTS/CHARTERS/MEETINGS

---

## WHY CHOOSE US?

- Inclusive fare for ease of budgeting
- Flexible, customizable itineraries, excursions and events
- Sleek yachts with impressive modern design and interiors
- Spacious, airy suites with endless views
- Inherently secure, exclusive, distraction-free environment
- Luxurious amenities and legendary personalized service
- Dining options from casual alfresco venues to Michelin-inspired cuisine
- Multiple destinations while only unpacking once

## CONSIDER OUR YACHTS FOR:

- Employee and sales incentives
- Meetings and conferences
- Customer and client appreciation
- Special group events, celebrations and milestones
- Accommodations for international sporting events, festivals, etc.

**CURRENTLY QUOTING INCENTIVE GROUPS FOR  
2020, AND CHARTERS WITH CUSTOMIZABLE  
ITINERARIES FOR 2021 AND BEYOND**



# INCENTIVE GROUP POLICY

GROUP BENEFITS	INCENTIVE GROUPS
Min/Max Number of Suites Required to Qualify	Minimum = 10 suites Maximum = 30 Suites Double occupancy booked and paid in full
Examples	Company sponsored event, meeting, incentive trip One person pays Need for operational support
Lock In Rate	Contracted rate, locked in at contract signing
Deposit Schedule	Initial deposit with Signed Contract 20% Payment # 2 = 20% Payment # 3 = 20% Payment # 4 = 20% Final Payment = 20%
Yacht Credit/Suite	With 10 suites (double occupancy) booked and paid in full. \$300 Yacht Credit valid towards Shore Excursions, Spa, Boutiques, upgraded fines wines & spirits
Tour Conductors (TC)	1 for 10: Maximum of (2) TCs can be earned
Commission	Customized Rates

# SUITE DIMENSIONS

SUITE TYPE	NO.	SUITE SIZES FEET <sup>2</sup>   METER <sup>2</sup>	TERRACE SIZES FEET <sup>2</sup>   METER <sup>2</sup>
THE OWNER'S SUITE	2	1098   102	592   55
THE VIEW SUITE	4	571 – 624   53 - 58	86 – 97   8 - 9
THE LOFT SUITE	12	700   65	76   7
THE GRAND SUITE	14	635   59	108   10
THE SIGNATURE SUITE	27	474   44	101   9
THE TERRACE SUITE	<u>90</u>	312   29	67   6
	149		

- Includes three ADA Suites (1 Signature, 2 Terrace)
- Innovative wall system allows suite layouts to be modified to suit the purpose of each voyage.
- Flexible configuration allows adjacent suites to expand into larger suites; which may appeal to MICE planners who seek to provide similar accommodations for their top performers. Suite count can reduce down to 106 with wall openings.

# VENUE CAPACITY

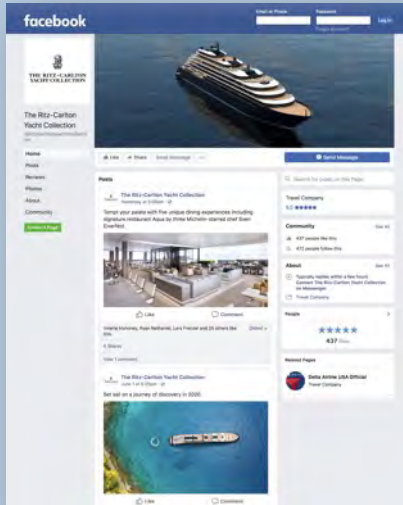
- Stand-up reception can be held for all guests in the Observation Lounge or the bow of the yacht.
- All guests can be seated for dining at once in different venues; a dining event for all guests can be arranged on land.
- Multifunction space has various seating configurations for breakout sessions.

YACHT SPECIFICATIONS						
PUBLIC AREAS	LOCATION	APPROX. SIZE FEET <sup>2</sup>	APPROX. SIZE METERS <sup>2</sup>	SEATING CAPACITY	STANDING CAPACITY	STAND-UP RECEPTION
OBSERVATION TERRACE	DECK 10	4736	440	100	200	
OBSERVATION LOUNGE	DECK 10	3072	285.4	96	150	■
THE HUMIDOR	DECK 10	404	37.5	14	14	
MISTRAL	DECK 8	4408	409.5	121	150	
BOW OF THE YACHT	DECK 6	N/A	N/A	N/A	175	■
THE BAR	DECK 6	939	87.2	11	30	
S.E.A.	DECK 6	702	65.2	28	N/A	
TALAAT NAM	DECK 6	1117	103.8	33	125	
TALAAT NAM (ALFRESCO DINING)	DECK 6	1217	113.1	44	125	
THE POOL HOUSE	DECK 5	3042	282.6	114	150	
THE POOL HOUSE (ALFRESCO DINING)	DECK 5	4341	403.3	84	N/A	
THE LIVING ROOM	DECK 4	5624	522.5	131	200	
THE MEETING ROOMS	DECK 4	575	53.4	UP TO 40	45	
MAIN DINING EXPERIENCE	DECK 4	4818	447.6	141	225	
DINING PRIVÉE	DECK 4	N/A	N/A	10	20	
MARINA TERRACE	DECK 3	1744	162	20	60	
MARINA	DECK 3	1787	166	59	60	
THE MEETING ROOMS	BOARDROOM LAYOUT	CLASSROOM LAYOUT	U-SHAPE LAYOUT			
HALF ROOM CAPACITY	18	18	15			
WHOLE ROOM CAPACITY	40	36	30			

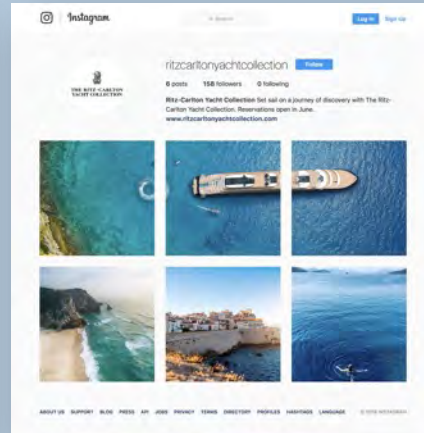
# FOLLOW US!



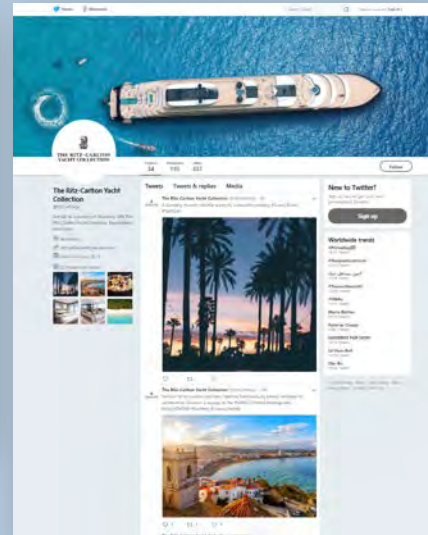
@ritzcarltonyachtcollection



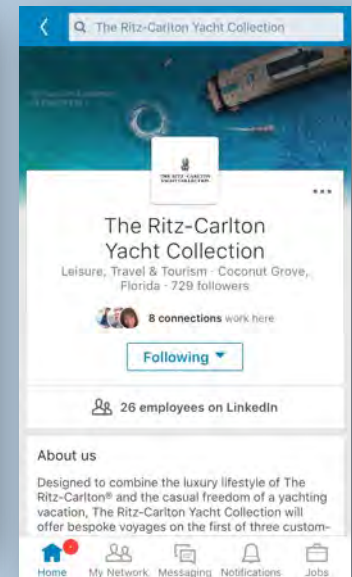
@ritzcarltonyachtcollection



@ritzcarltonyc



The Ritz-Carlton Yacht Collection





THE RITZ-CARLTON  
YACHT COLLECTION



THANK YOU

*Renderings are artistic concepts. All features, plans and specifications are subject to change without notice.*